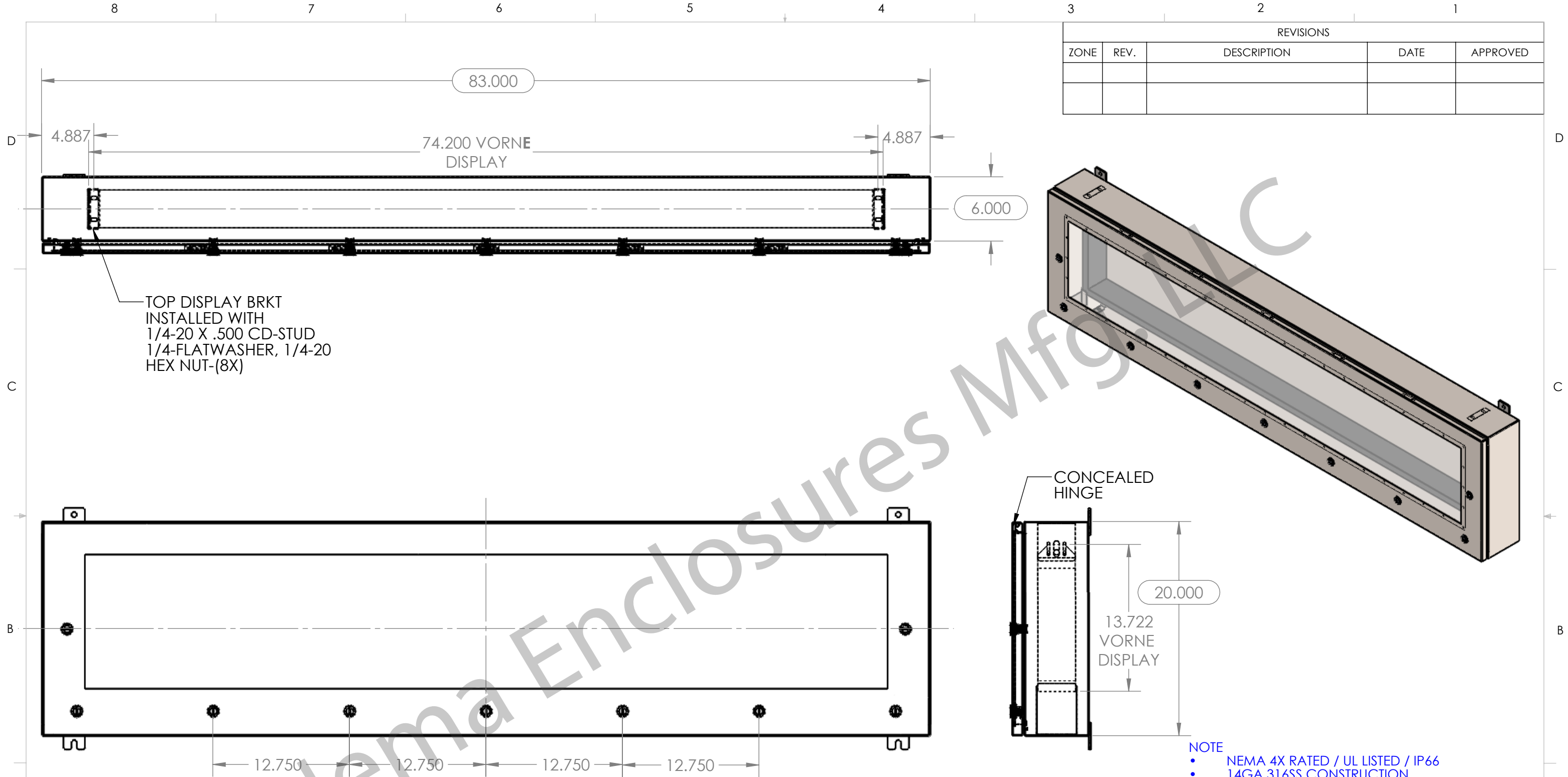


REVISIONS				
ZONE	REV.	DESCRIPTION	DATE	APPROVED



- NOTE**
- NEMA 4X RATED / UL LISTED / IP66
 - 14GA 316SS CONSTRUCTION
 - QUARTER TURN LATCH / CONCEALED HINGE
 - 1/4" THICK LEXAN WINDOW INSTALLED

**Fits Vorne Productivity Unit:
XL800-32240T (Not Included)**

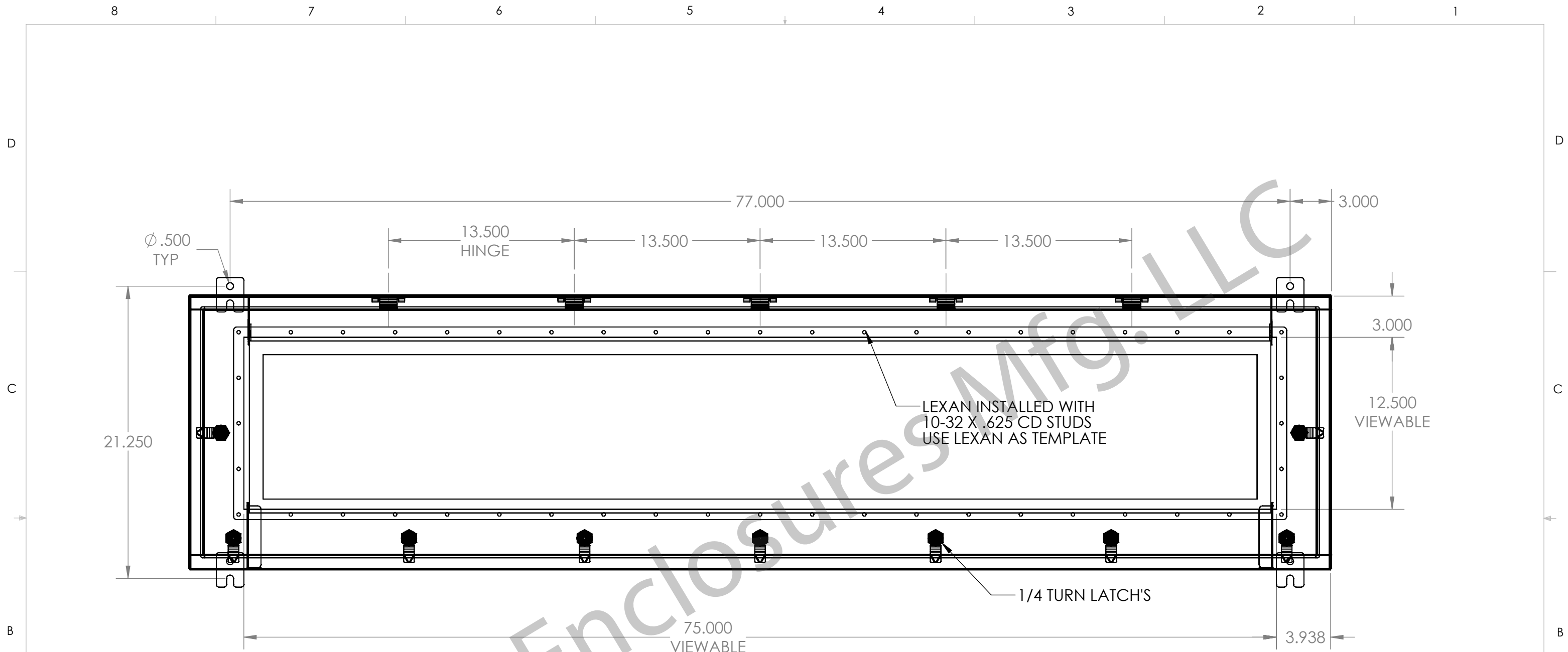


PROPRIETARY AND CONFIDENTIAL
THE INFORMATION CONTAINED IN THIS DRAWING IS THE SOLE PROPERTY OF NEMA ENCLOSURES. ANY REPRODUCTION IN PART OR AS A WHOLE WITHOUT THE WRITTEN PERMISSION OF NEMA ENCLOSURES IS PROHIBITED.

UNLESS OTHERWISE SPECIFIED:
DIMENSIONS ARE IN INCHES
TOLERANCES:
FRACTIONAL ± 1/16
ANGULAR: MACH ± 1°
HOLE +.004/-0.001 (LASER ONLY)
ONE PLACE DECIMAL ± .0625
TWO PLACE DECIMAL ± .030
THREE PLACE DECIMAL ± .015
POWDER COAT STANDARD 2 MIL ± .5 MIL

	NAME	DATE	
DRAWN	OD	9/28/16	
CHECKED			
ENG APPR.			
MFG APPR.			
Q.A.			TITLE: NEMA ENCLOSURES 20" H X 83" W X 6" D NEMA 4X/IP66 FABRICATION
MATERIAL	14ga 316 SS		DWG. NO. CHDSS6208306VD
FINISH	BRUSHED		REV
	DO NOT SCALE DRAWING		SCALE: 1:9
			WEIGHT:
			SHEET 1 OF 5





Nema Enclosures Mfg. LLC



PROPRIETARY AND CONFIDENTIAL
 THE INFORMATION CONTAINED IN THIS DRAWING IS THE SOLE PROPERTY OF NEMA ENCLOSURES. ANY REPRODUCTION IN PART OR AS A WHOLE WITHOUT THE WRITTEN PERMISSION OF NEMA ENCLOSURES IS PROHIBITED.

UNLESS OTHERWISE SPECIFIED:
 DIMENSIONS ARE IN INCHES
 TOLERANCES:
 FRACTIONAL: ±1/16
 ANGULAR: MACH ±1°
 HOLE: +.004/-0.001 (LASER ONLY)
 ONE PLACE DECIMAL: ±.0625
 TWO PLACE DECIMAL: ±.030
 THREE PLACE DECIMAL: ±.015
 POWDER COAT STANDARD 2 MIL ±.5 MIL

	NAME	DATE
DRAWN	OD	9/28/16
CHECKED		
ENG APPR.		
MFG APPR.		
Q.A.		
MATERIAL	14ga 316 SS	
FINISH	BRUSHED	
DO NOT SCALE DRAWING		



TITLE:
 NEMA ENCLOSURES
 20" H X 83" W X 6" D
 NEMA 4X/IP66
 FABRICATION

DWG. NO. CHDSS6208306VD REV

SCALE: 1:9 WEIGHT: SHEET 2 OF 5