

REVISIONS				
ZONE	REV.	DESCRIPTION	DATE	APPROVED
--				

FITS VORNE PRODUCTIVITY UNIT:
XL600-3T (NOT INCLUDED)

- NOTE
- NEMA 4X RATED / UL LISTED / IP66, CSD STYLE ENCLOSURE
 - 14GA. 316 STAINLESS STEEL CONSTRUCTION, BRUSH FINISHED.
 - NO BACKPANEL, OR STUDS.
 - QUARTER TURN LATCH / CONCEALED HINGE.
 - 1/4" LEXAN WINDOW WITH 10-32 CD STUDS INSIDE ATTACHED.



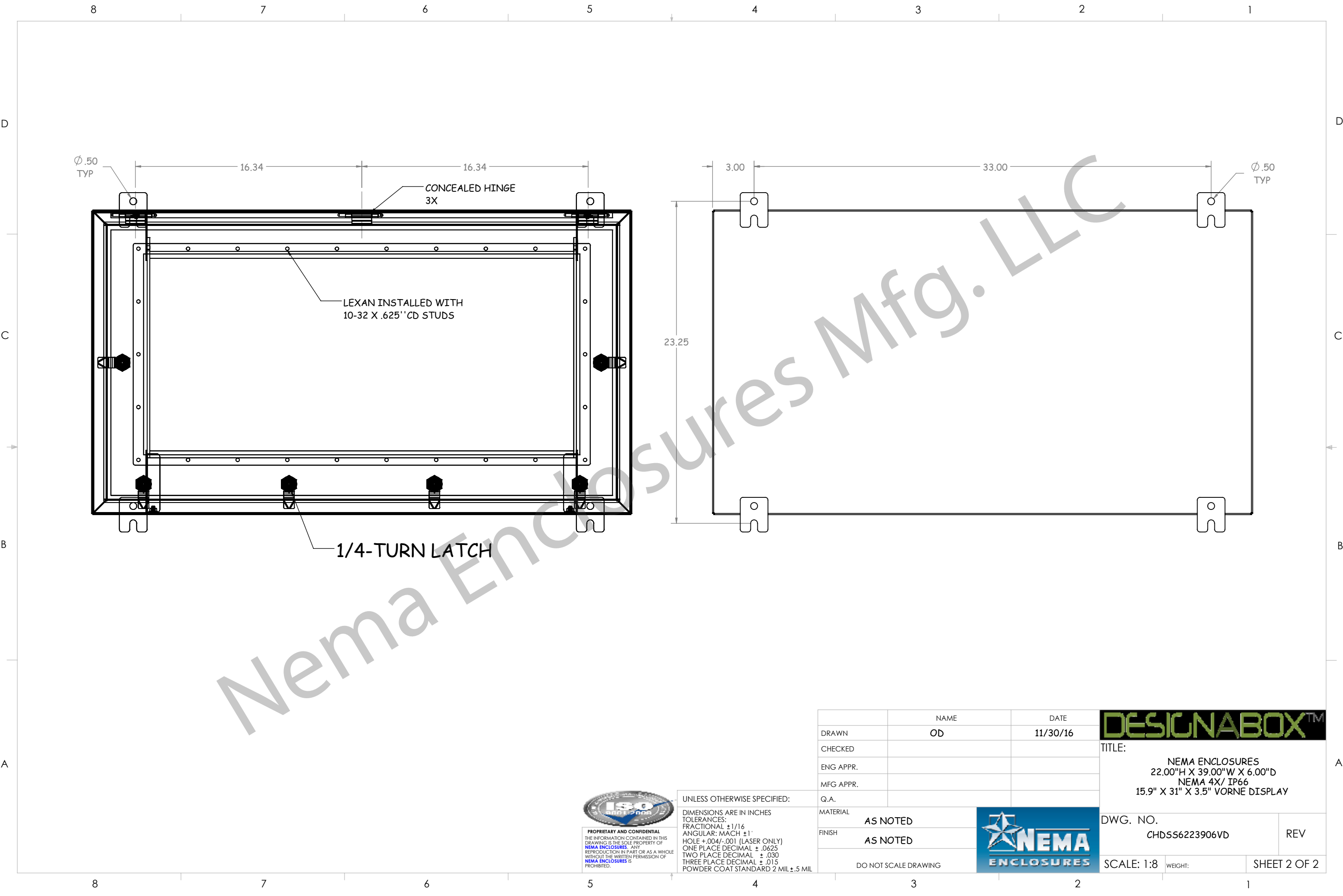
PROPRIETARY AND CONFIDENTIAL
THE INFORMATION CONTAINED IN THIS
DRAWING IS THE SOLE PROPERTY OF
NEMA ENCLOSURES. ANY
REPRODUCTION IN PART OR AS A WHOLE
WITHOUT THE WRITTEN PERMISSION OF
NEMA ENCLOSURES IS
PROHIBITED.

UNLESS OTHERWISE SPECIFIED:

DIMENSIONS ARE IN INCHES
TOLERANCES:
FRACTIONAL: $\pm 1/16$
ANGULAR: MACH $\pm 1^\circ$
HOLE: $+0.004/-0.001$ (LASER ONLY)
ONE PLACE DECIMAL $\pm .0625$
TWO PLACE DECIMAL $\pm .030$
THREE PLACE DECIMAL $\pm .015$
POWDER COAT STANDARD 2 MIL $\pm .5$ MIL


	NAME	DATE	DESIGNABOX™ TITLE: NEMA ENCLOSURES 22.00"H X 39.00"W X 6.00"D NEMA 4X/ IP66 15.9" X 31" X 3.5" VORNE DISPLAY	
DRAWN	OD	11/30/16		
CHECKED				
ENG APPR.				
MFG APPR.				
Q.A.			DESIGNABOX™ DWG. NO. CHD556223906VD REV	
MATERIAL	AS NOTED			
FINISH	AS NOTED			
DO NOT SCALE DRAWING			SCALE: 1:8	WEIGHT:
			SHEET 1 OF 2	





PROPRIETARY AND CONFIDENTIAL
THE INFORMATION CONTAINED IN THIS
DRAWING IS THE SOLE PROPERTY OF
NEMA ENCLOSURES. ANY
REPRODUCTION IN PART OR AS A WHOLE
WITHOUT THE WRITTEN PERMISSION OF
NEMA ENCLOSURES IS
PROHIBITED.

UNLESS OTHERWISE SPECIFIED:
DIMENSIONS ARE IN INCHES
TOLERANCES:
FRACTIONAL: $\pm 1/16$
ANGULAR: MACH $\pm 1^\circ$
HOLE: $+ .004 / - .001$ (LASER ONLY)
ONE PLACE DECIMAL $\pm .0625$
TWO PLACE DECIMAL $\pm .030$
THREE PLACE DECIMAL $\pm .015$
POWDER COAT STANDARD 2 MIL $\pm .5$ MIL

	NAME	DATE	DESIGNABOX™ TITLE: NEMA ENCLOSURES 22.00"H X 39.00"W X 6.00"D NEMA 4X/ IP66 15.9" X 31" X 3.5" VORNE DISPLAY	
DRAWN	OD	11/30/16		
CHECKED				
ENG APPR.				
MFG APPR.				
Q.A.				
MATERIAL	AS NOTED			
FINISH	AS NOTED			
DO NOT SCALE DRAWING			DWG. NO.	REV
			CHD556223906VD	
			SCALE: 1:8	WEIGHT:
			SHEET 2 OF 2	