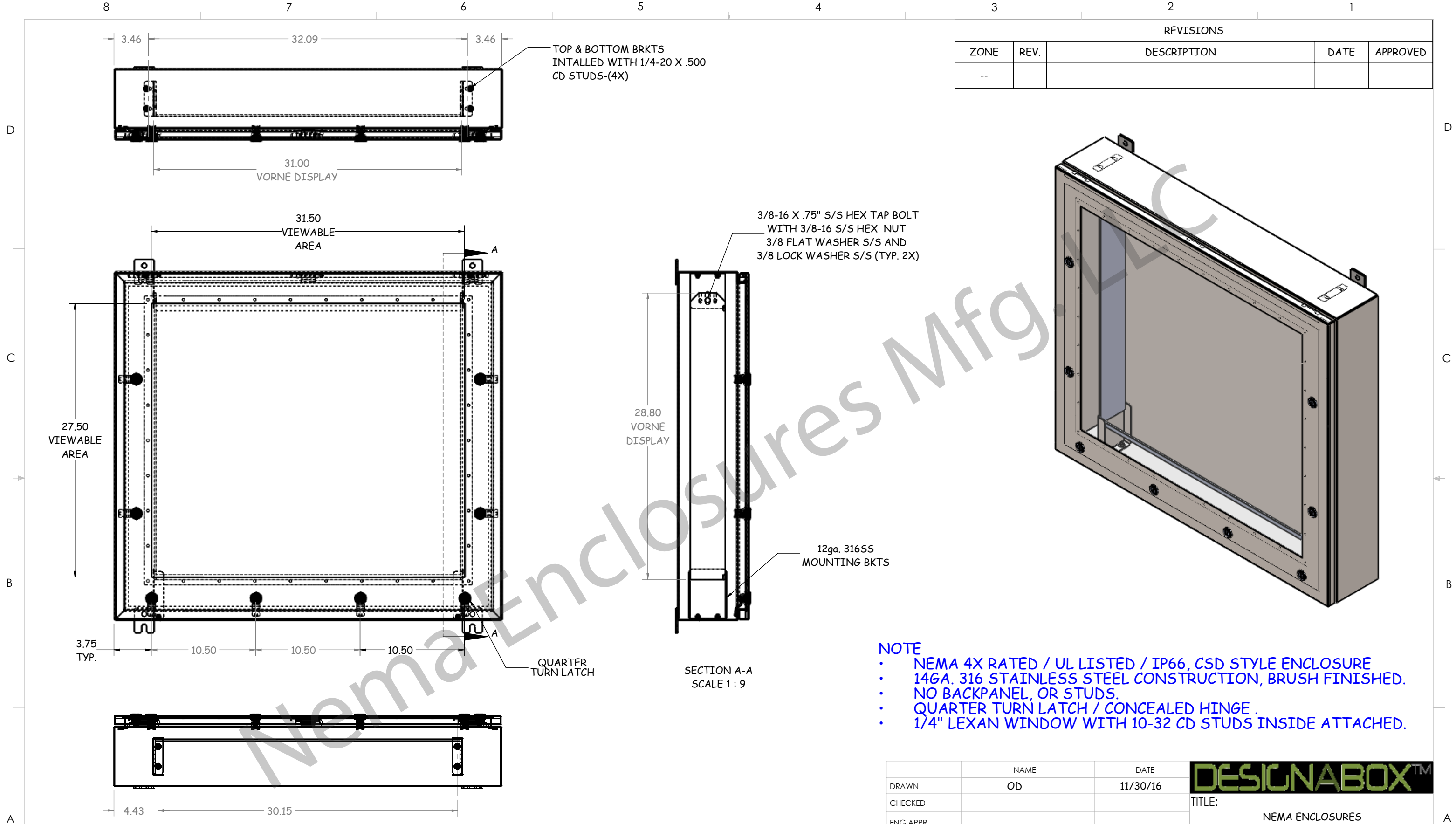
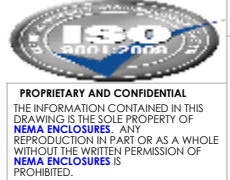


REVISIONS				
ZONE	REV.	DESCRIPTION	DATE	APPROVED
--				



- NOTE**
- NEMA 4X RATED / UL LISTED / IP66, CSD STYLE ENCLOSURE
 - 14GA. 316 STAINLESS STEEL CONSTRUCTION, BRUSH FINISHED.
 - NO BACKPANEL, OR STUDS.
 - QUARTER TURN LATCH / CONCEALED HINGE.
 - 1/4" LEXAN WINDOW WITH 10-32 CD STUDS INSIDE ATTACHED.

**Fits Vorne Productivity Unit:
XL600-6T (not included)**

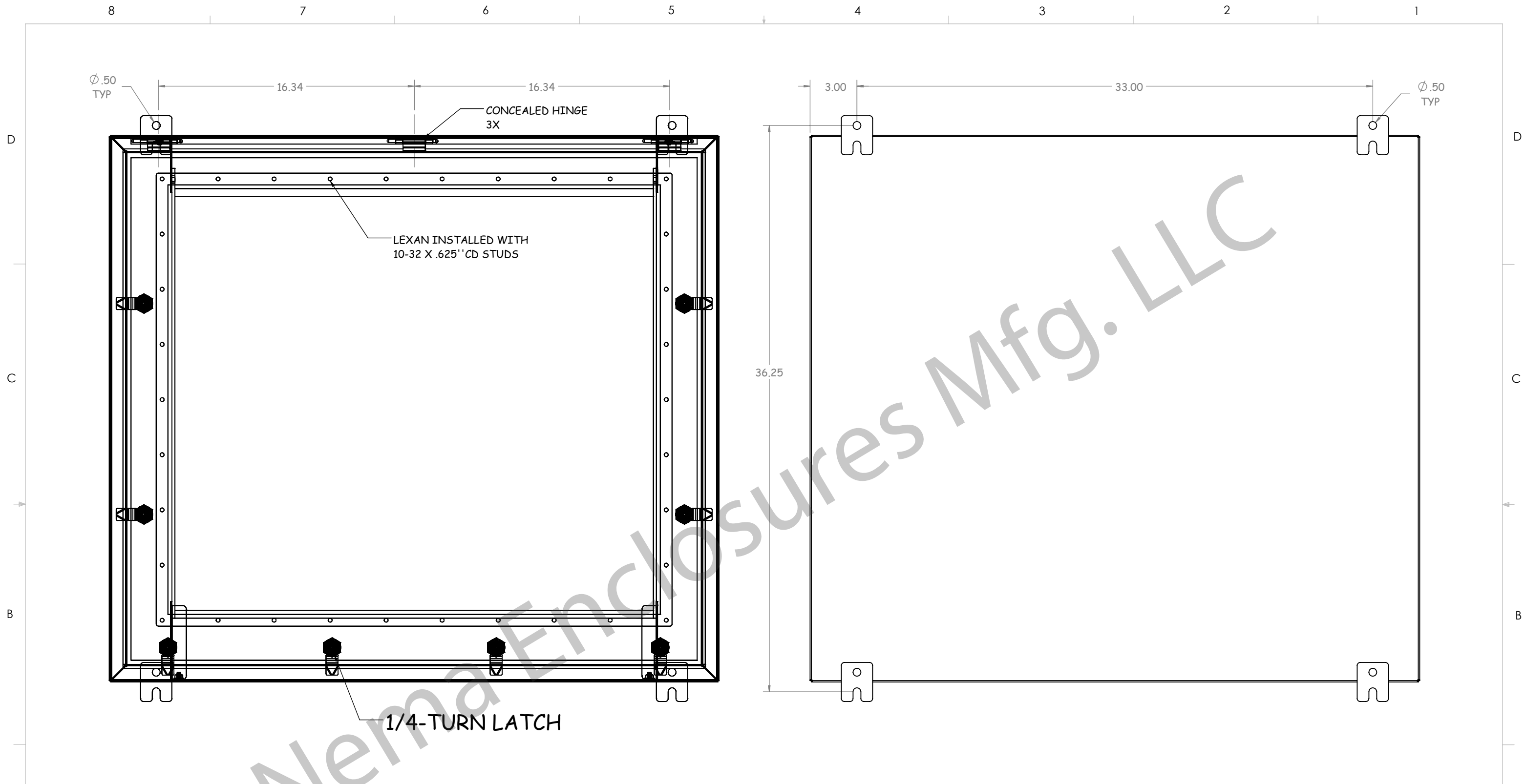


UNLESS OTHERWISE SPECIFIED:
 DIMENSIONS ARE IN INCHES
 TOLERANCES:
 FRACTIONAL ±1/16
 ANGULAR: MACH ±1°
 HOLE +.004/-001 (LASER ONLY)
 ONE PLACE DECIMAL ±.0625
 TWO PLACE DECIMAL ±.030
 THREE PLACE DECIMAL ±.015
 POWDER COAT STANDARD 2 MIL ±.5 MIL

	NAME	DATE
DRAWN	OD	11/30/16
CHECKED		
ENG APPR.		
MFG APPR.		
Q.A.		
MATERIAL	AS NOTED	
FINISH	AS NOTED	
DO NOT SCALE DRAWING		



DESIGNABOX™	
TITLE: NEMA ENCLOSURES 35.00"H X 39.00"W X 6.00"D NEMA 4X/ IP66 28.8" X 31" X 3.5" VORNE DISPLAY	
DWG. NO. CHDSS6353906VD	REV
SCALE: 1:8	WEIGHT:
SHEET 1 OF 2	



Ø.50
TYP

16.34

CONCEALED HINGE
3X

16.34

LEXAN INSTALLED WITH
10-32 X .625" CD STUDS

3.00

33.00

Ø.50
TYP

36.25

1/4-TURN LATCH

Nema Enclosures Mfg. LLC



PROPRIETARY AND CONFIDENTIAL
THE INFORMATION CONTAINED IN THIS DRAWING IS THE SOLE PROPERTY OF NEMA ENCLOSURES. ANY REPRODUCTION IN PART OR AS A WHOLE WITHOUT THE WRITTEN PERMISSION OF NEMA ENCLOSURES IS PROHIBITED.

UNLESS OTHERWISE SPECIFIED:
DIMENSIONS ARE IN INCHES
TOLERANCES:
FRACTIONAL ± 1/16
ANGULAR: MACH ± 1°
HOLE +.004/-0.001 (LASER ONLY)
ONE PLACE DECIMAL ± .0625
TWO PLACE DECIMAL ± .030
THREE PLACE DECIMAL ± .015
POWDER COAT STANDARD 2 MIL ± .5 MIL

	NAME	DATE
DRAWN	OD	11/30/16
CHECKED		
ENG APPR.		
MFG APPR.		
Q.A.		
MATERIAL	AS NOTED	
FINISH	AS NOTED	
DO NOT SCALE DRAWING		



DESIGNABOX™

TITLE:
NEMA ENCLOSURES
35.00"H X 39.00"W X 6.00"D
NEMA 4X/ IP66
28.8" X 31" X 3.5" VORNE DISPLAY

DWG. NO. CHDSS6353906VD REV

SCALE: 1:8 WEIGHT: SHEET 2 OF 2